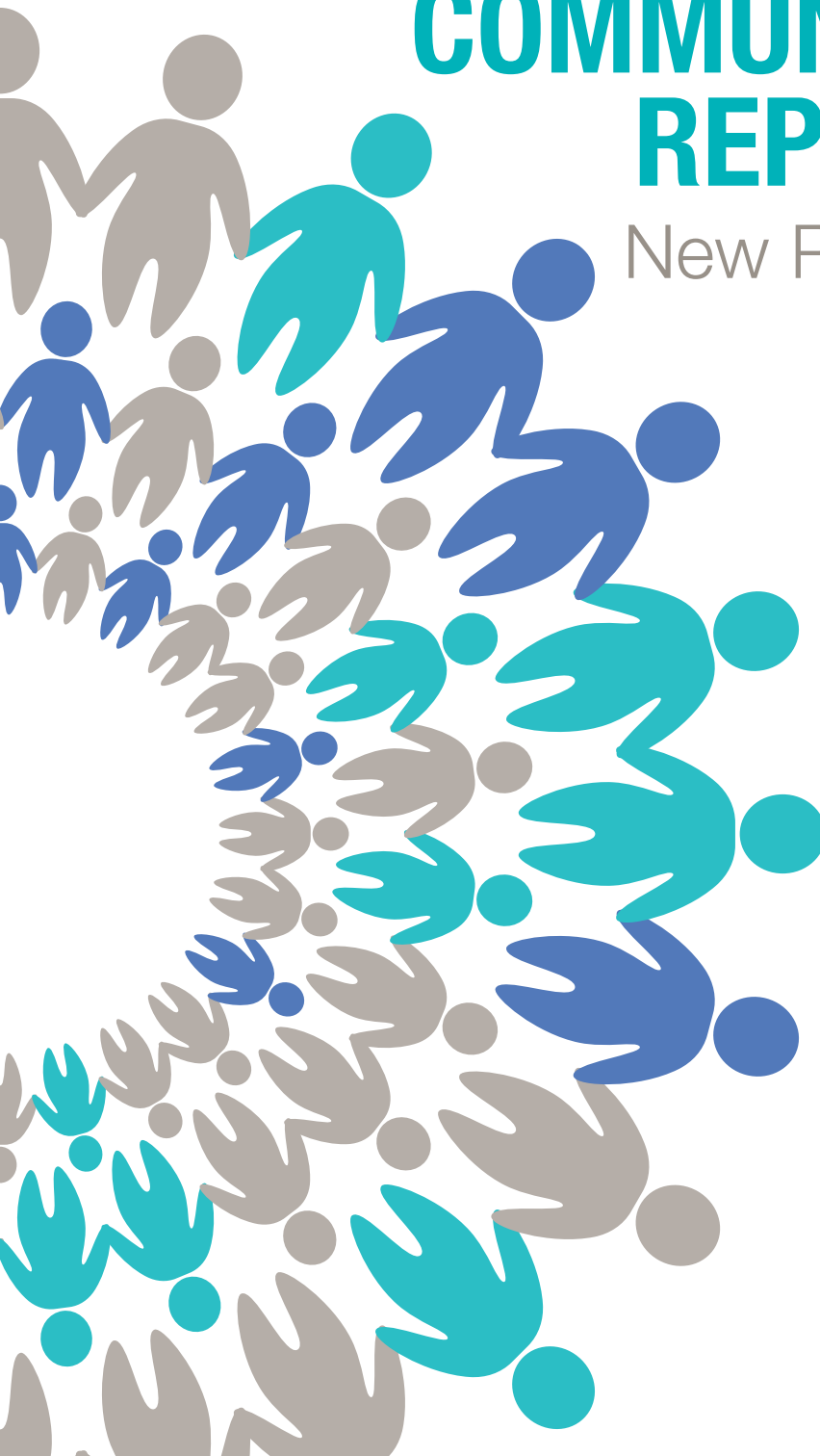




MAYO CLINIC
HEALTH SYSTEM

COMMUNITY REPORT

New Prague
2018





HIGHLIGHTS

Improving quality, safety and patient experience outcomes

- Invested \$1.2 million in a new Women and Children's Clinic. The 9,000 square feet of remodeled space was designed to expand the number of exam rooms to 12, and procedure rooms to two, improve the check-in process and flow of services for patients, increase staff work spaces to improve efficiencies, and create a separate waiting space for pediatric patients.
- Rolled out the "Reach Out and Read" program in New Prague. This program provides free, age appropriate books at well-child visits for young children between 6 months and 5 years of age. Initial funding was provided by the New Prague Rotary Club.
- Completed 281 baseline concussion tests at New Prague Area Schools and 52 at Tri-City United. Also administered 84 post-concussion follow-up ImPACT tests at New Prague Area Schools and 11 at Tri-City United.
- Awarded accreditation in the laboratory by the College of American Pathologists for excellence in services and professionalism.
- Passed Minnesota Department of Health surveys for both the hospital and nutrition services department.
- Reintroduced urology services with Kenneth Smith, M.D. who provides services for circumcisions and orchiectomies, vasectomies in addition to providing patients with cystoscopies, ureterostomies, bladder biopsies and stone removal.

THE NUMBERS

45,980

CLINIC VISITS

6,750

EMERGENCY DEPARTMENT VISITS



- Embedded schedulers into clinic departments to improve access and communication for patients.
- Reintroduced otorhinolaryngology (ear, nose and throat) services with Fareeda Hussain, M.D., who can provide care related to ear tubes, tonsillectomies and adenoidectomies.
- Welcomed several new physicians and health care providers in the Family Medicine and Emergency Medicine Departments.

Modernizing facilities

- Installed a new 3-D mammography machine, which allows for superior image, fewer false positives and the ability for immediate on-site radiologist communication with patient.
- Completed addition of a new handicap accessible patient shower room for the medical/surgical floor.
- Installed ceiling lifts in two additional medical/surgical rooms on the second floor of the hospital for easier and safer patient transfers and mobility.
- Added automated medication dispensing unit to procedure room for immediate access to medications needed during a procedure.
- Installed a new medical supply inventory management system which allows staff to focus more time on patient needs.

770

PROCEDURES
AND
SURGERIES

1,780

HOSPITAL
INPATIENT
DAYS

156

BIRTHS

CONNECTIONS

Connecting
with our
community

- Partnered with New Prague Area Schools and the City of New Prague and their joint powers board to transition The Fitness Center equipment and programs to the new Fitness and Aquatic Center (FAC), which is owned and operated by a joint powers agreement. Mayo Clinic Health System in New Prague maintains a health and wellness partnership with the FAC.
- Provided more than \$1.2 million through our New Prague Charity Care program, which provides local access to care for all, regardless of ability to pay.
- Partnered with New Prague High School for the sixth year of our Health Care Career Exploration Class. The class offers hands-on experience in over 26 clinical and non-clinical departments.
- Invested resources in community-based health and wellness programs including local Relay for Life events, Hope House, Peace Center, Backpack Food Program, Community Wellness Challenge, Yoga in the Park, school mentoring and more.
- Provided health-related education to service groups and local organizations, as well as at community events on topics including colon cancer screening, opioid epidemic, medication management, men's health, disease fighting foods, Alzheimer's disease, Parkinson's disease and distracted driving for driver's education.
- Partnered with area community organizations and events such as Tri-City United 4 Healthy Youth, New Prague Early Childhood Family Education, KCHK Aging Well Lifestyle Expo and others to provide health and wellness education.
- Partnered with Scott County, Le Sueur Public Health and other organizations to gather, identify and address local health concerns.
- Involved with community groups such as Community Education Advisory Council, area Chambers of Commerce including Belle Plaine, Elko/New Market, Lonsdale and New Prague, New Prague Rotary Club, New Prague Charter Commission and City of New Prague/New Prague Area Schools Joint Powers Board.
- Partnered with area colleges for students completing clinical hours in anesthesiology, laboratory, nursing, physical/occupational/speech therapies and radiology.
- Principal sponsor for Run New Prague, the New Prague Chamber of Commerce half marathon, 10K, 5K and Kids Fun Run.

2,160

TRANSITIONAL
CARE PATIENT
DAYS

106

VOLUNTEERS

6,100

VOLUNTEER
SERVICES
HOURS



Mayo Clinic Health System serves communities by providing routine, preventive and specialized services close to home. We support local nonprofit organizations and collaborate with partners to regularly assess and address the health care needs of our community. Mayo Clinic Health System is proud to be part of New Prague and the surrounding communities.





MAYO CLINIC HEALTH SYSTEM
mayoclinichealthsystem.org

©2019 Mayo Foundation for Medical Education and Research. All rights reserved. MAYO, MAYO CLINIC, Mayo Clinic Health System and the triple-shield Mayo logo are trademarks and service marks of MEMER.

MC4484-299rev0419